

WOOFAA Air-hound

wireless air quality monitoring system

rapid deployment • easy to scale • TCP RESTful API • online sensor calibration

Commercial grade 7-in-1 indoor air quality sensor in a single box to provide per-minute data on: PM2.5, PM10, PM100, VOC, CO2, air temperature and relative humidity. Wall- or ceiling- mounted on 100~240 VAC power supply. Standard data communication over wifi for cloud or on-premises deployment. [Web-based dashboard for mobile device](#) & TCP RESTful API port are readily available.

PM2.5/PM10 Data	
Sensor	Laser particle sensor, Light scattering method
Measuring Range	PM2.5: 0-800µg/m3 PM10: 0-800µg/m3
Output Resolution	0.1µg/m ³
Zero Point Stability	±3µg/m ³
Accuracy	10% of reading (25°C, 10%-60%RH)
Temperature and Humidity Data	
Sensor	High precision digital integrated temperature and humidity sensor
Measuring Range	Temperature: -20°C-60°C / Humidity: 0-99%RH
Output Resolution	Temperature: 0.01°C / Humidity: 0.01%RH
Accuracy	Temperature: ±0.5°C@25°C Humidity: ±3.0%RH (20%-60%RH)
CO2 Data	
Sensor	Non-Dispersive Infrared Detector (NDIR)
Measuring Range	0-5,000ppm
Output Resolution	1ppm
Accuracy	±40ppm +3% of the reading (25°C, 10%-60%RH)
TVOC Data	
Sensor	TVOC
Measuring Range	0-3.5mg/m3
Output Resolution	0.001mg/m ³
Accuracy	±0.05mg +10% of reading (25°C, 10%-60%RH)
HCHO Data	
Sensor	Electrochemistry Formaldehyde sensor
Measuring Range	0-3.5mg/m3
Output Resolution	0.001mg/m ³
Accuracy	±0.05mg +10% of reading (25°C, 10%-60%RH)

* HCHO is an optional feature and be available on request. Our stock model WFSIEQMSD-1828D monitors only six air parameters: PM2.5, PM10, CO2, TVOC, Temperature and RH.

Image top: sensor specifications

Job references



theMART, Chicago, USA



English School Foundation campuses



Hongkong Land @Exchange Square

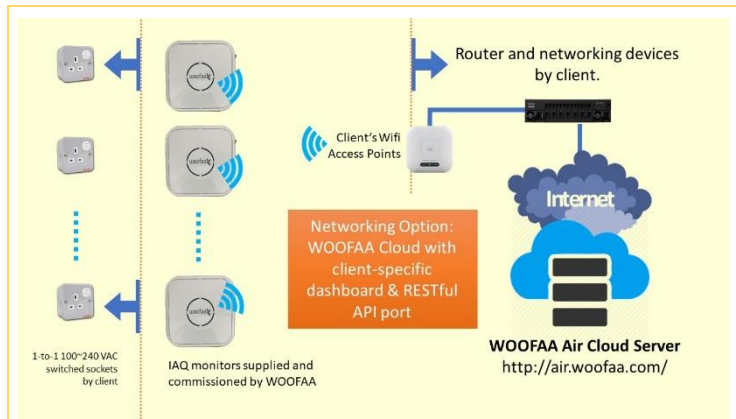
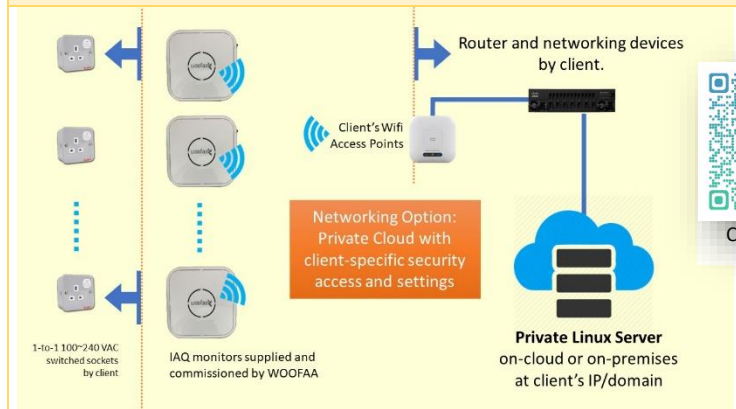


Image top and bottom: on-cloud or on-premises networking options



Contact Us